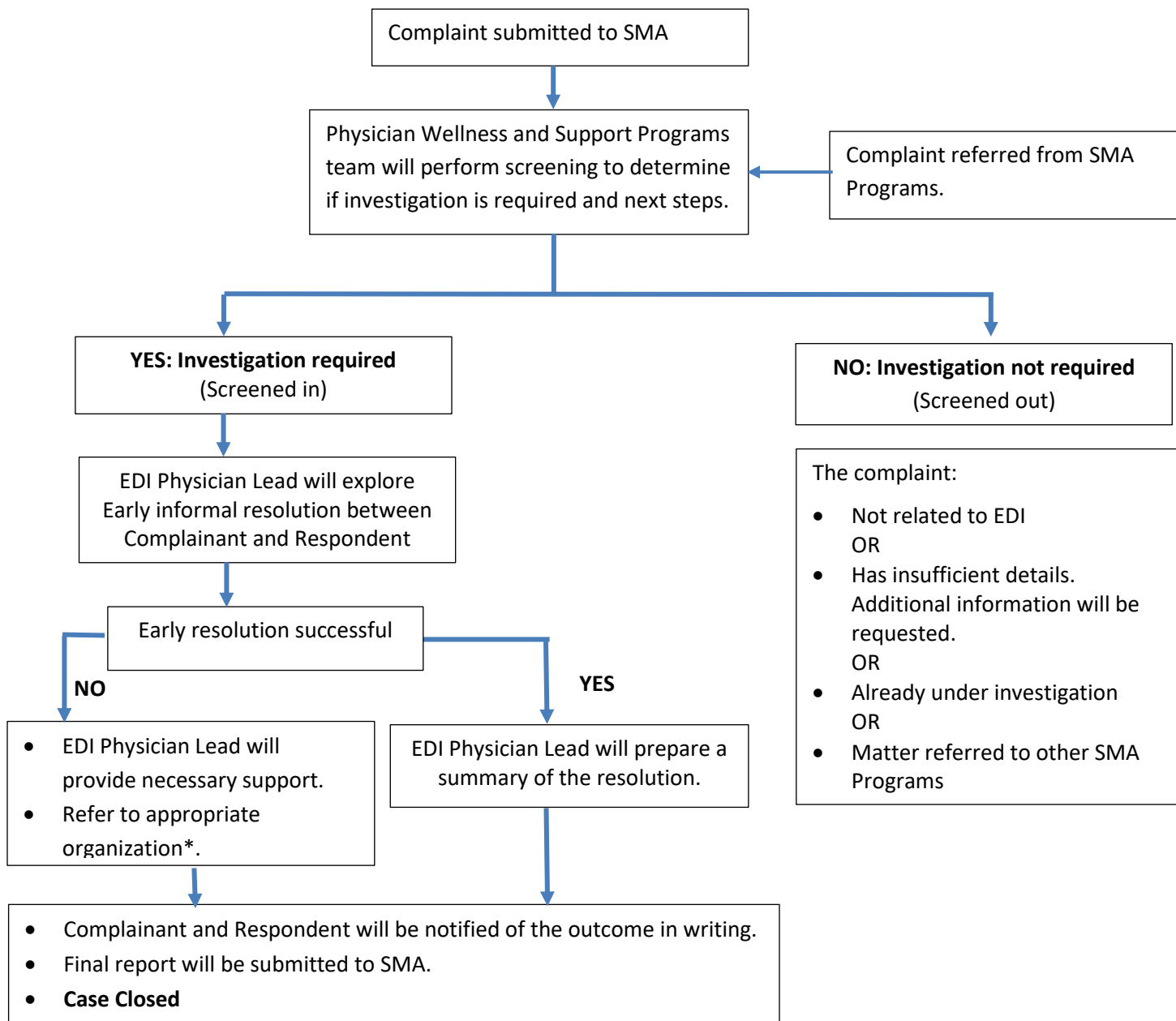




Equity, Diversity and Inclusion Complaint Procedure Flowchart

This flowchart outlines the SMA's Complaint procedure process.

A **Complaint** can be submitted by members who feel they have personally experienced racism, discrimination, harassment, or reprisal and want the SMA to intervene.



*Including but not limited to College of Physicians and Surgeons, Human Rights Commission, Office of Student Affairs UofS